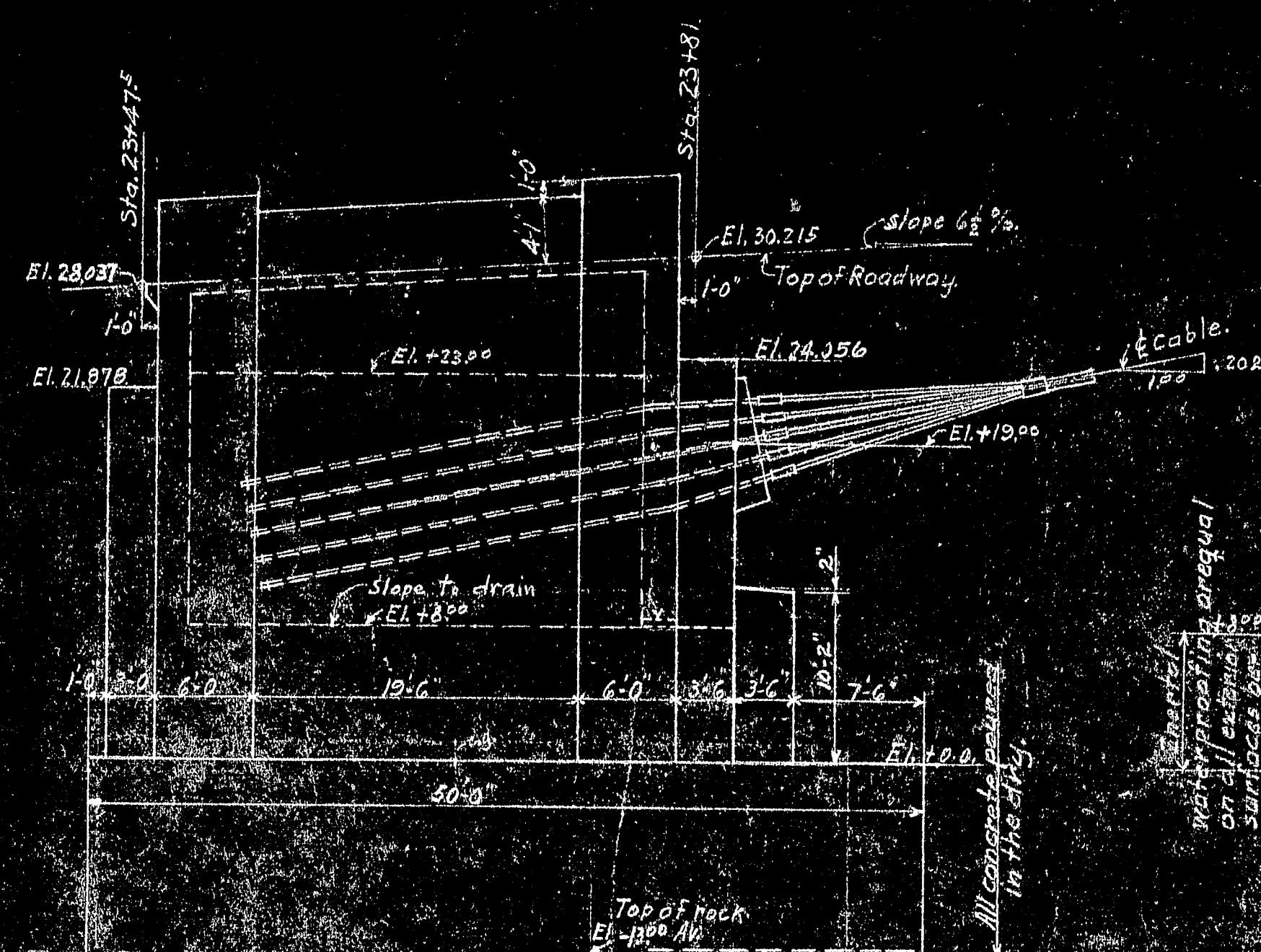
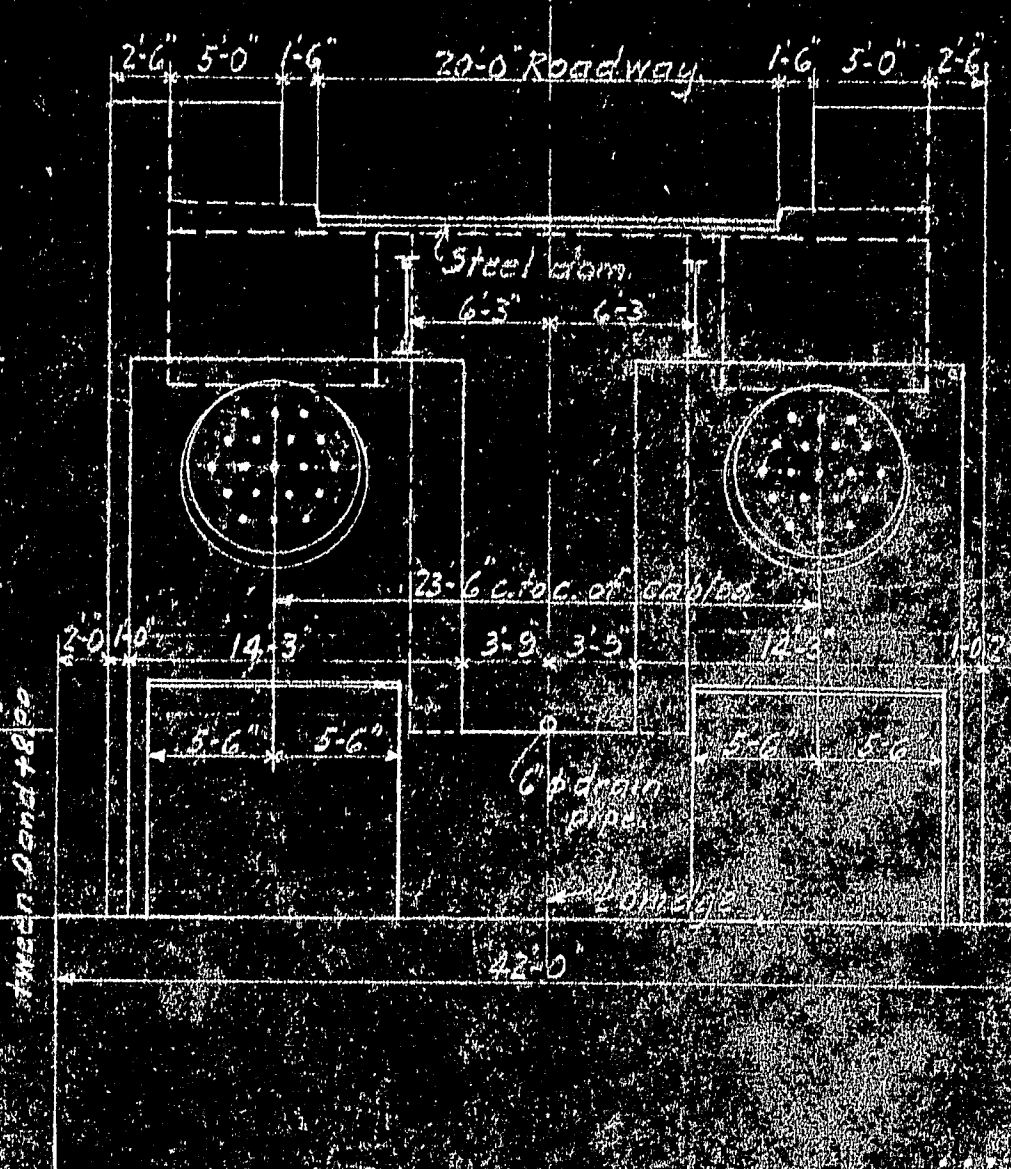




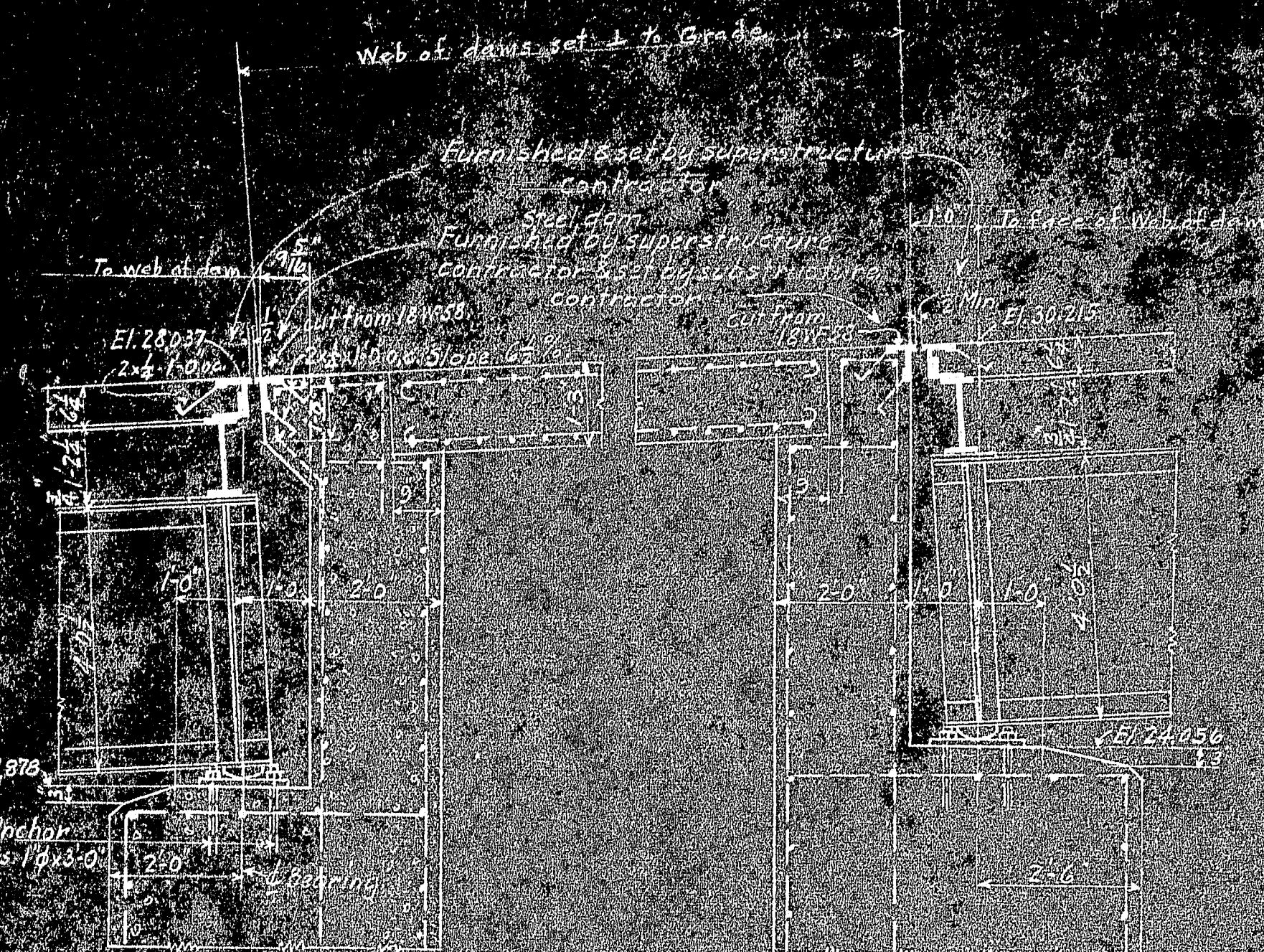
HALF SOUTH ELEVATION HALF CROSS SECTION



EAST ELEVATION



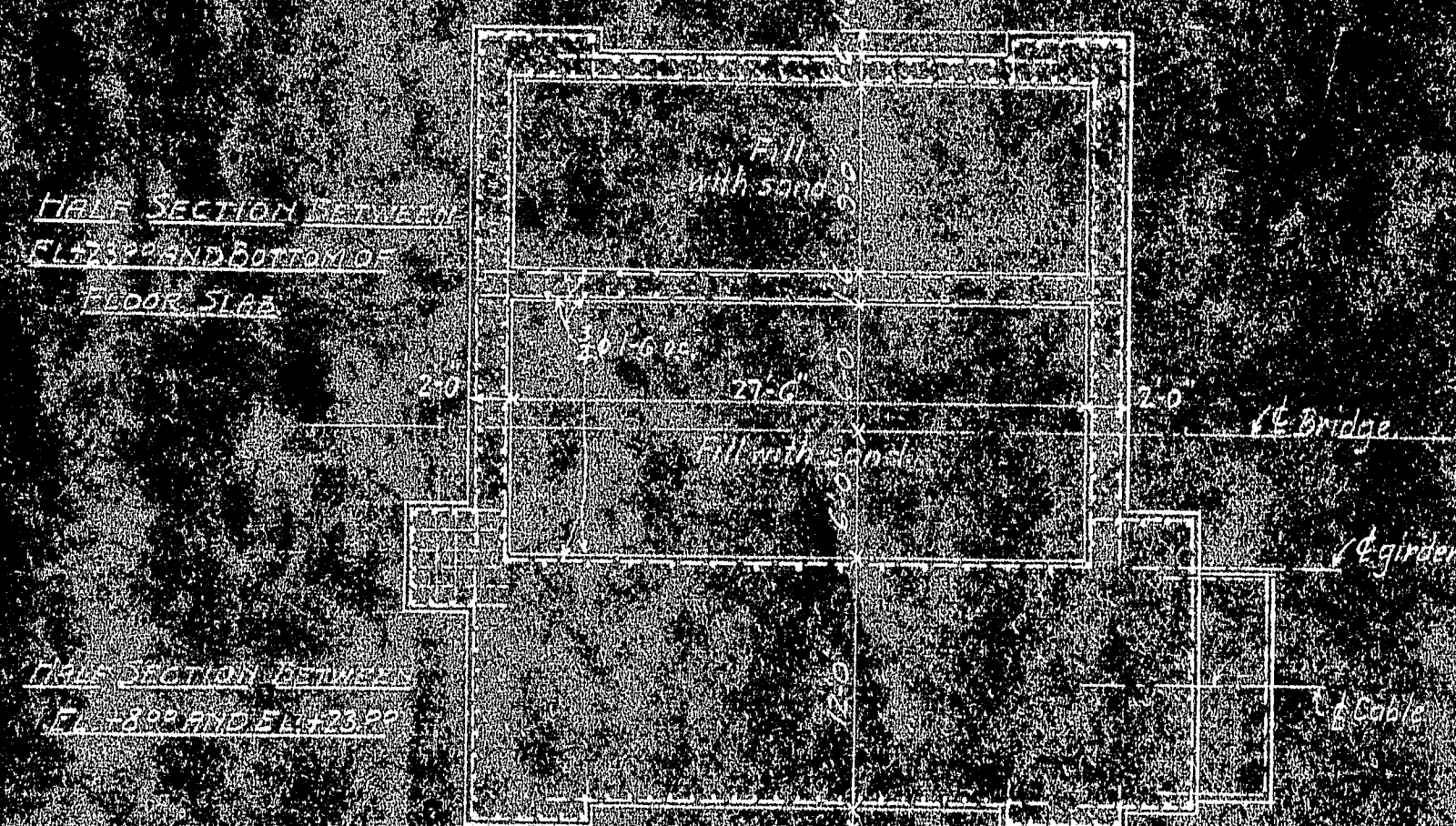
NORTH ELEVATION



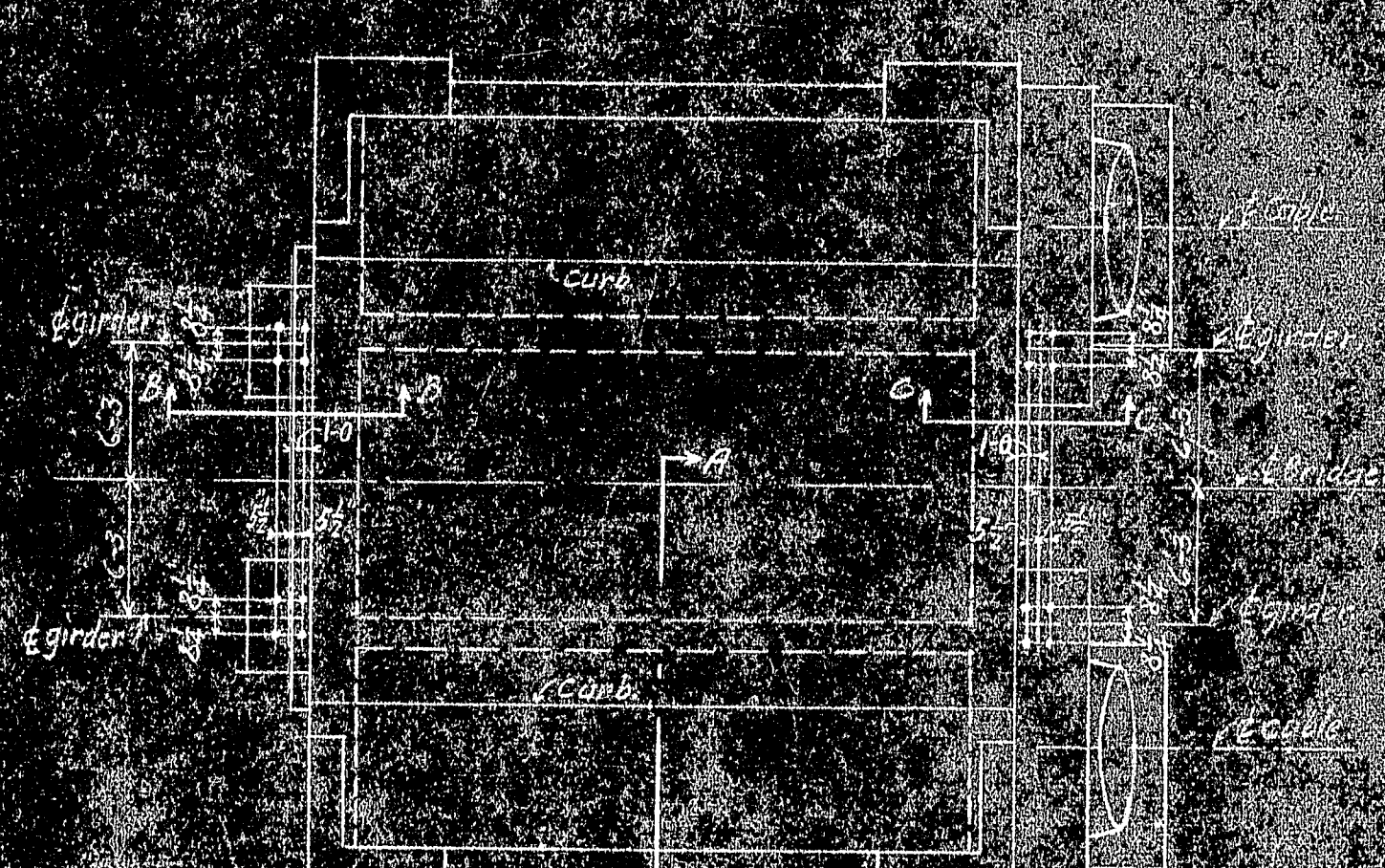
SECTION B-E

SECTION C:

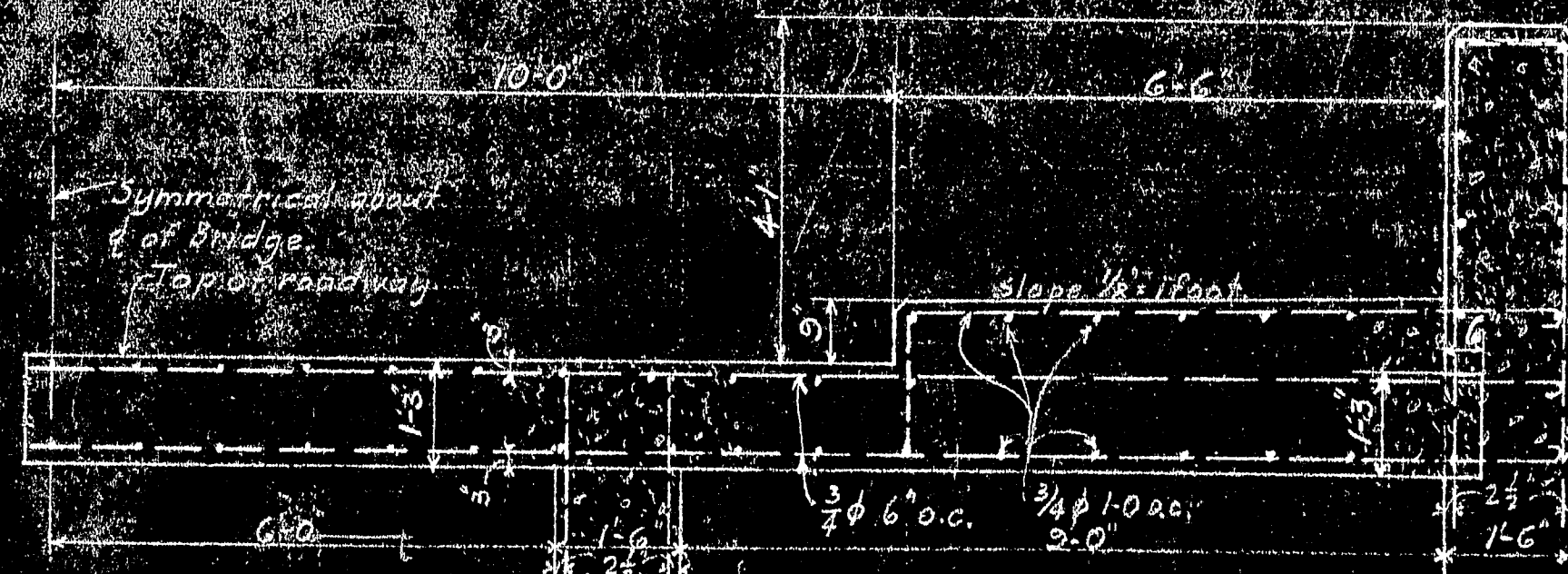
Scale $\frac{1}{2} = 100$



PLAN AT BOTTOM



TOP PLAN



SECTION A-3

Scale $\frac{1}{2}'' = 100'$

CONCRETE: All concrete to be Class A.

REINFORCEMENT: Unless otherwise indicated, all surfaces to be reinforced with 2 bars spaced 12 in. horizontally and vertically.

BITUMINOUS WATERPROOFING: Inside walls of anchorages in tank bottom, when fill to be mopped with bituminous material, waterproofing using not less than 4 gallons per 100 sq. ft.

Materials and application in accordance with AWS D10.0 specifications.

PLACING STEEL: The anchor chains for the cables and bearings for the approach girders shall be furnished by the contractor for the superstructure and placed by the contractor for the substructure.

WATERPROOFING: OF EXTERIOR SURFACES: where indicated on this drawing to be of Inertol or approved equal, as noted in specifications.

ANCHORAGE QUANTITIES	
Cablecrete	2070 cu yd
Reinforcement	49000 lbs
Sand fill	330 cu yd
Internal waterproofing	1410 sq ft
Bituminous do	2530 sq ft
Steel clams	960 lbs
Pileless anchor chains	8000 lbs
	2000 cu yd

<p><u>REVISIONS</u></p> <p>1-7-38 - Add note "slope to drain at elevation 10.0"</p> <p>Correct slope of Castle Change estimated survey of Reinf. to agree with Items of Addendum No. 1</p> <p>2-11-38 - Add dimensions locating roadway dains on enclosure</p> <p>Add submerged logs at setting anchor bolts in East Elevation, Level 10</p> <p>sloping surface to 2.5 slope</p> <p>2-19-38 - Revise Elevations of Bridge Seats.</p>	<p><u>SUBSTRUCTURE</u></p> <p>PWA PROJECT NO ME 1010</p> <p>DEER ISLE JEDGWICK BRIDGE DISTRICT</p> <p>BRIDGE OVER EGGMOGIN REACH FROM LITTLE DEER ISLE TO JEDGWICK HANCOCK COUNTY, MAINE.</p> <p>DEER ISLAND ANCHORAGE</p>	<p>SCALE 1/4" = 1'-0"</p> <p>DRAWING NUMBER RS 3310-F-112</p> <p>SEP. 27, 1937</p>
	<p>ROBINSON AND STEINMAN</p> <p>ENGINEERS</p> <p>NEW YORK CITY</p>	